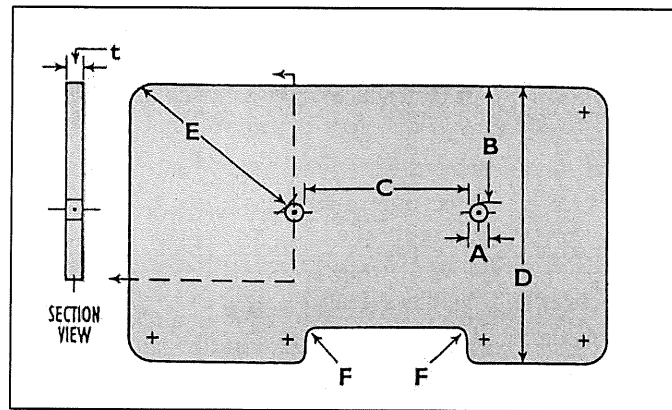


HOLES AND NOTCHES – This Chart Should be Used to Determine Minimum Sizes and Placement of Holes and Notches in Tempered or Heat Strengthened Glass:

GLASS THICKNESS (t)		1/8	3/16	1/4	3/8	1/2	3/4	GENERAL RULE
Minimum Diameter of Holes	A	1/4"	1/4"	1/4"	3/8"	1/2"	3/4"	$A \geq t$
Distance from Hole Rim to Edge of Glass	B	1/4"	3/8"	1/2"	3/4"	1"	1 1/2"	$B \geq 2t$ and 1/4"
Distance between Rims of Holes	C	3/8"	3/8"	1/2"	3/4"	1"	1 1/2"	$C \geq 2t$ and 3/8"
Distance from Corner to Rim of Hole	E	13/16"	1 1/4"	1 5/8"	2 7/16"	3 1/4"	4 7/8"	$E \geq 6.5 \times t$
Minimum Fillet Radius	F	1/8"	3/16"	1/4"	3/8"	1/2"	3/4"	$F \geq t$



- Countersink Holes Require Technical Review and Approval Before Order Acceptance.
- Large Holes and Notches Greater than 1/3 the Narrow Dimension Require Technical Review and Approval.

HOLE AND NOTCH LOCATION TOLERANCES-

- For Dimensions of Hole Center from Specified Edge +/- 1/16"
- For Dimensions Between Hole Centers +/- 1/16"
- Chips and Flakes Will Not Exceed 1/16"
- Notch Dimensions for Glass 1/4" and Under +/- 1/16"
- Notch Dimensions for 3/8" and 1/2" +/- 1/8"

MONOLITHIC GLASS SIZE TOLERANCES-

THICKNESS	CLEAN CUT	EDGEWORK STANDARD	EDGEWORK TIGHT
3/32"- 1/4"	+/- 1/16"	+/- 1/16"	+/- 1/16"
3/8"	+/- 3/32"	+/- 1/8"	+1/16"
1/2"	+/- 1/8"	+/- 1/8"	+ 1/16" – 1/8"
3/4"	+/- 3/16"	+/- 3/16"	+1/8" – 3/16"